



HAUSBAU-MIT-SYSTEM.DE

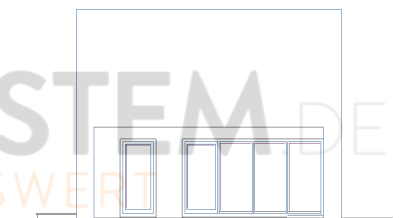
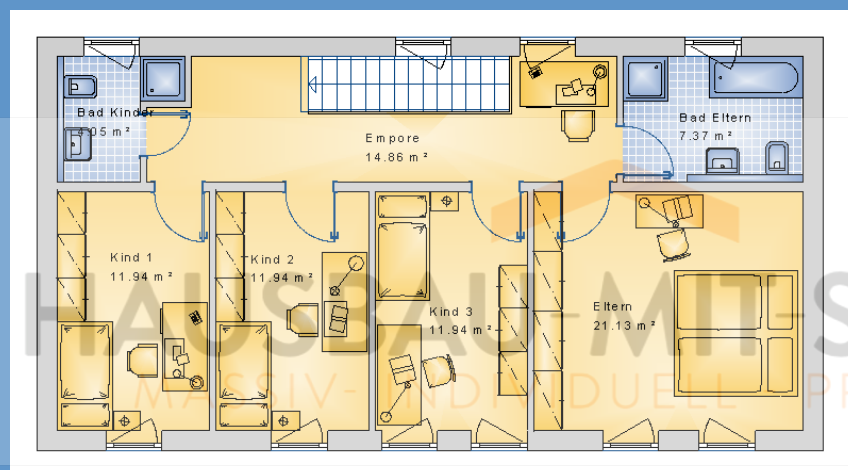
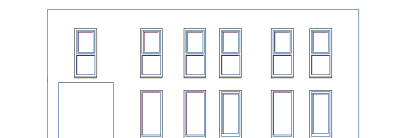
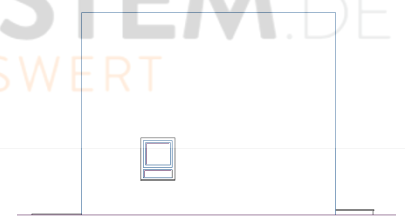
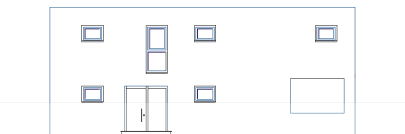
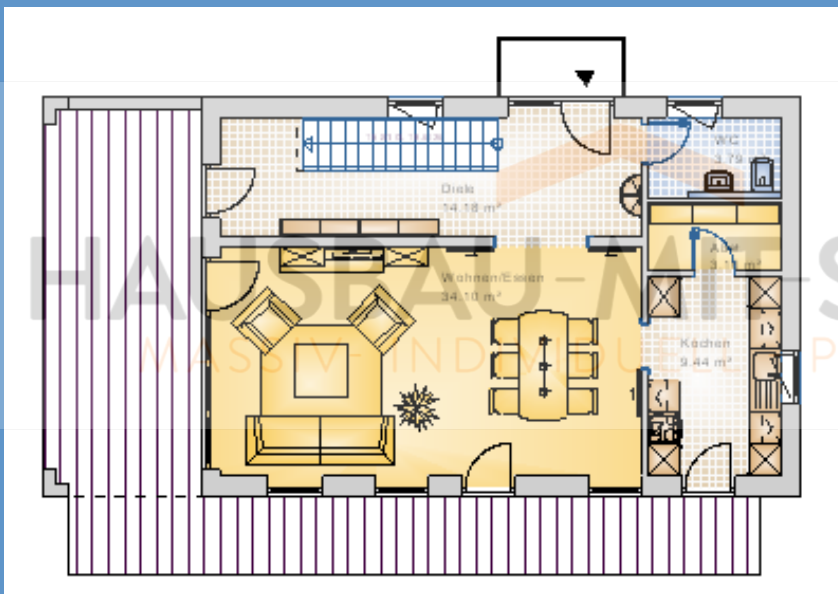
MASSIV- INDIVIDUELL - PREISWERT



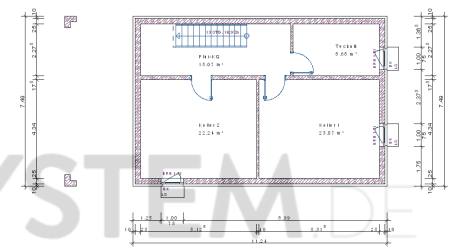
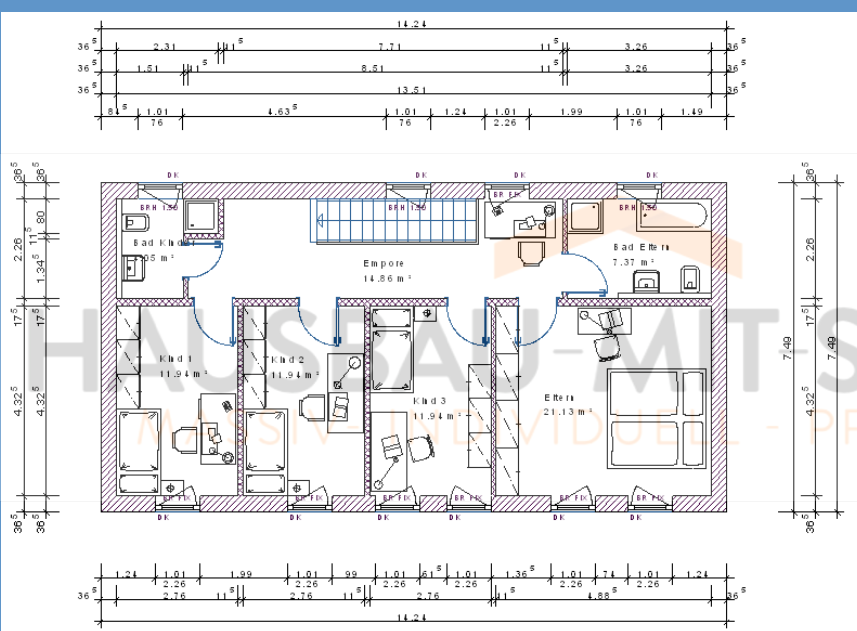
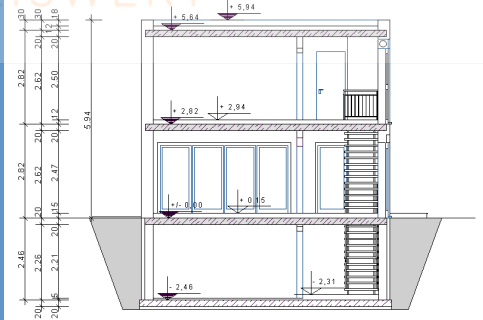
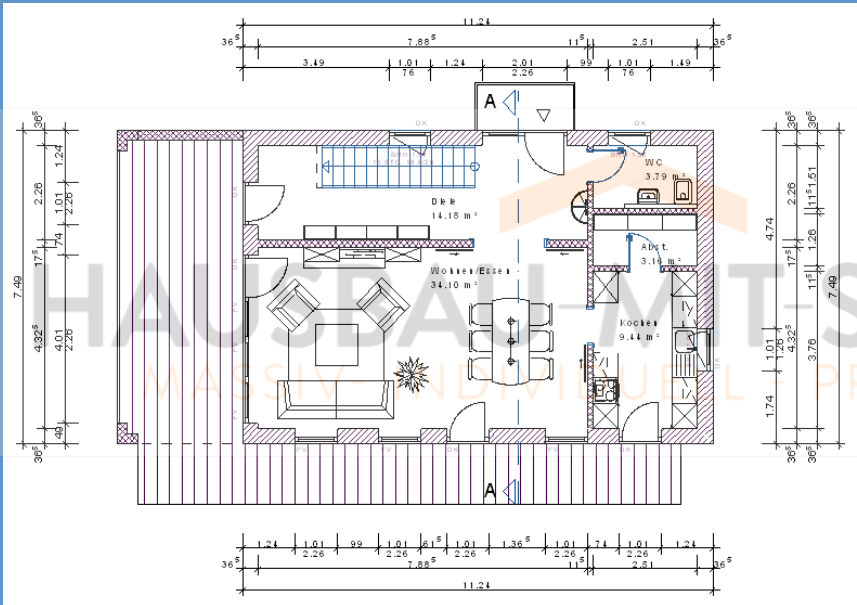
EFH Bauhausstil „Ratingen“ bauen

Wohnfläche Gesamt	150,11 m ²
Wohnfläche EG	66,25 m ²
Wohnfläche DG	83,86 m ²

Haus schlüsselfertig bauen EFH Flachdach Variante 34



Haus massiv bauen EFH Kubus Variante 34



Haus günstig bauen

Einfamilienhaus Variante 34



Steckbrief des Hauses

Wohn-/Nutzflächen

Wohnfläche Erdgeschoss	
Wohnen/Essen	35,68m ²
Diele	14,24m ²
Kochen	9,54m ²
WC	3,71m ²
Abst.	3,08m ²
Summe Erdgeschoss	66,25m ²

Wohnfläche Obergeschoss	
Eltern	21,41m ²
Empore	14,91m ²
Kind 1	12,03m ²
Kind 2	12,03m ²
Kind 3	12,26m ²
Bad Eltern	7,26m ²
Bad Kinder	3,96m ²
Summe Obergeschoss	83,86m ²

Gesamtwohnfläche 150,11m²

Nutzfläche Kellergeschoss	
Keller 1	22,88m ²
Keller 2	22,05m ²
Flur-KG	14,89m ²
Technik	8,56m ²
Summe Nutzfläche	68,38m ²

Geschossflächen/Volumen

BGF Kellergeschoss	84,19m ²
BGF Erdgeschoss	84,19m ²
BGF Obergeschoss	106,66m ²
Summe BGF	275,04m ²

BRI Kellergeschoss	202,892m ³
BRI Erdgeschoss	237,409m ³
BRI Obergeschoss	300,774m ³
BRI Dachgeschoss	31,997m ³
Summe BRI	773,072m ³