



# HAUSBAU-MIT-SYSTEM.DE

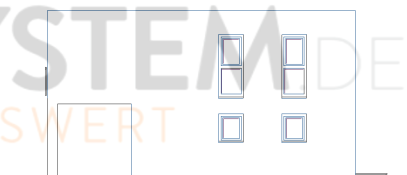
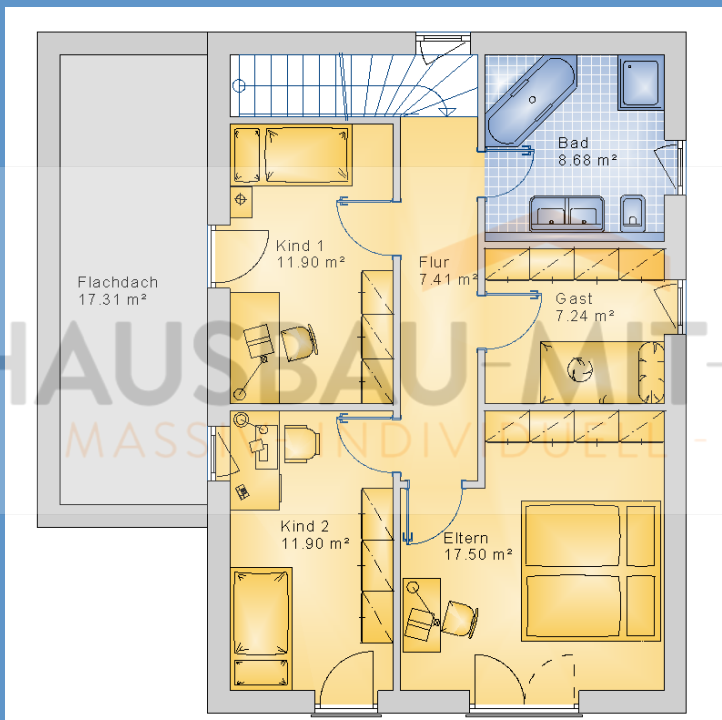
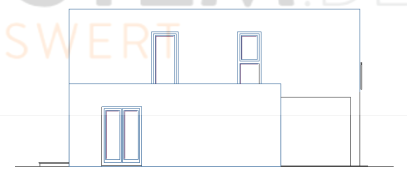
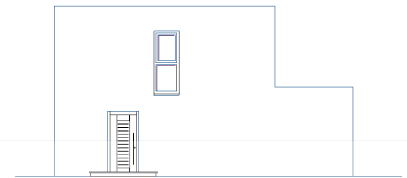
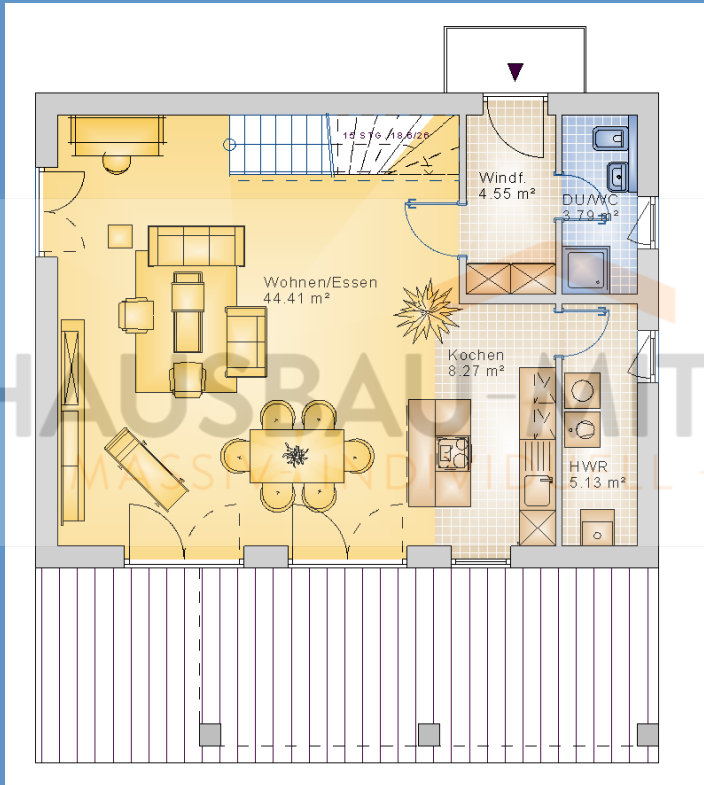
MASSIV- INDIVIDUELL - PREISWERT



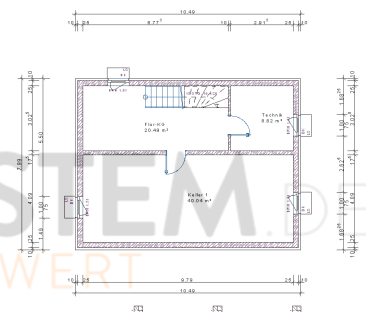
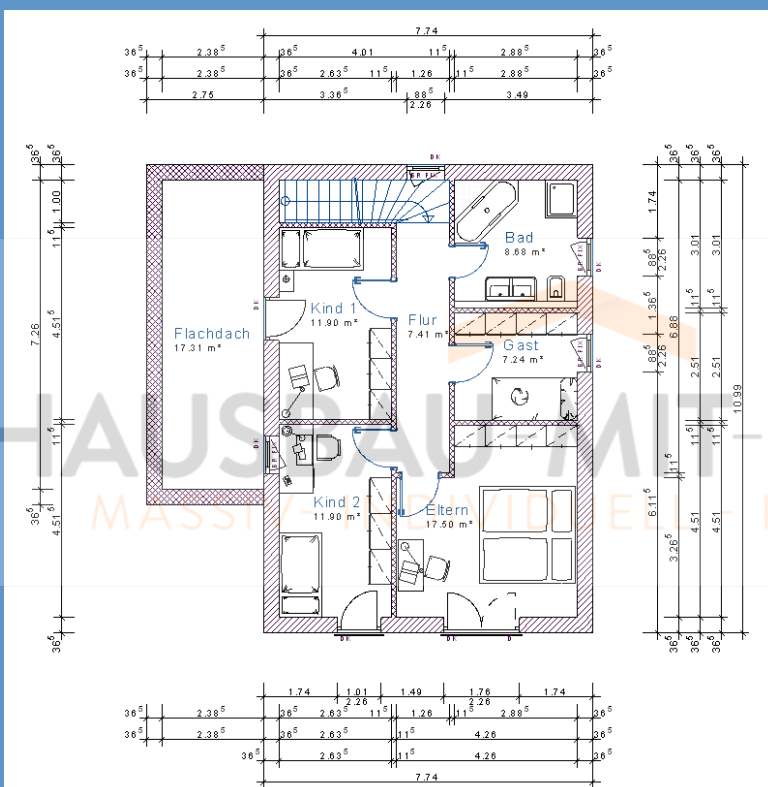
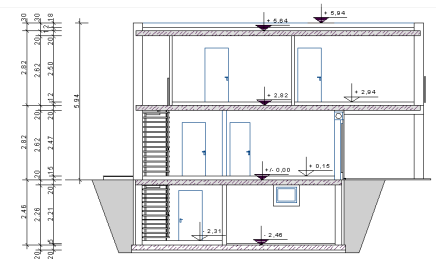
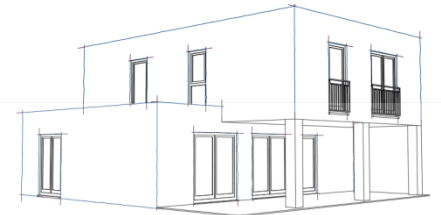
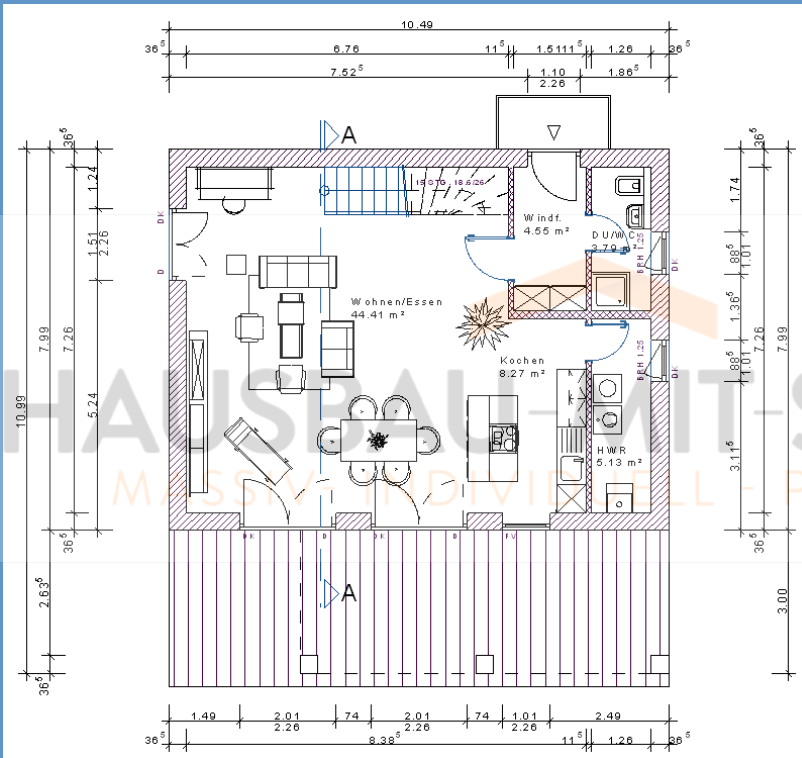
## EFH Bauhausstil „Mülheim“ bauen

Wohnfläche Gesamt	132,32 m <sup>2</sup>
Wohnfläche EG	67,05 m <sup>2</sup>
Wohnfläche DG	65,27 m <sup>2</sup>

# Haus schlüsselfertig bauen EFH Flachdach Variante 18



# Haus massiv bauen EFH Kubus Variante 18



# Haus günstig bauen

## Einfamilienhaus Variante 18



### Steckbrief des Hauses

#### Wohn-/Nutzflächen

Wohnfläche Erdgeschoss	
Wohnen/Essen	45,45 m <sup>2</sup>
Kochen	8,42 m <sup>2</sup>
HWR	5,02 m <sup>2</sup>
Windf.	4,46 m <sup>2</sup>
DU/WC	3,70 m <sup>2</sup>
Summe Erdgeschoss	67,05 m <sup>2</sup>

Wohnfläche Obergeschoss	
Eltern	17,72 m <sup>2</sup>
Kind 2	12,19 m <sup>2</sup>
Kind 1	11,99 m <sup>2</sup>
Bad	8,76 m <sup>2</sup>
Flur	7,28 m <sup>2</sup>
Gast	7,33 m <sup>2</sup>
Summe Obergeschoss	65,27 m <sup>2</sup>

Gesamtwohnfläche 132,32 m<sup>2</sup>

Nutzfläche Kellergeschoss	
Keller	39,76 m <sup>2</sup>
Flur-KG	20,29 m <sup>2</sup>
Technik	8,70 m <sup>2</sup>
Summe Nutzfläche	68,75 m <sup>2</sup>

#### Geschossflächen/Volumen

BGF Kellergeschoss	83,82 m <sup>2</sup>
BGF Erdgeschoss	83,82 m <sup>2</sup>
BGF Dachgeschoss	83,82 m <sup>2</sup>
Summe BGF	251,46 m <sup>2</sup>

BRI Kellergeschoss	222,948 m <sup>3</sup>
BRI Erdgeschoss	236,359 m <sup>3</sup>
BRI Obergeschoss	239,877 m <sup>3</sup>
Summe BRI	699,184 m <sup>3</sup>