



HAUSBAU-MIT-SYSTEM.DE

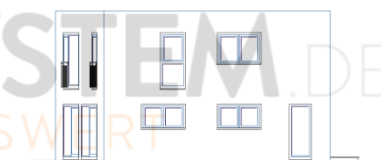
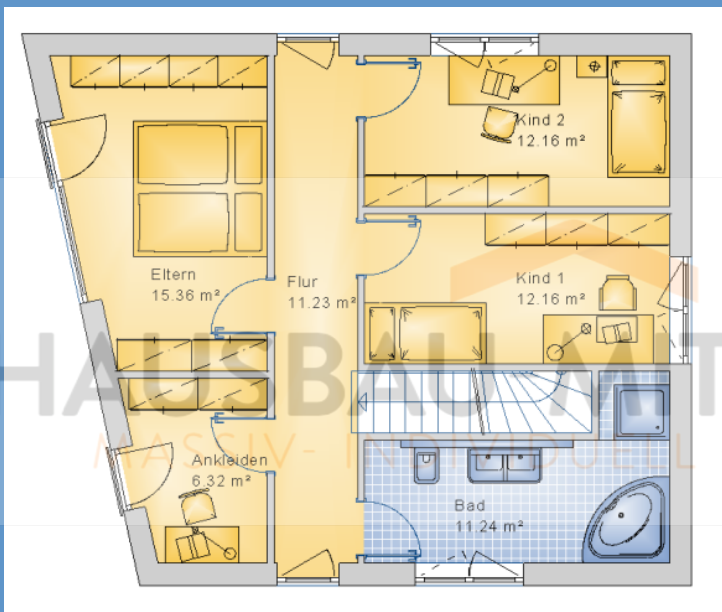
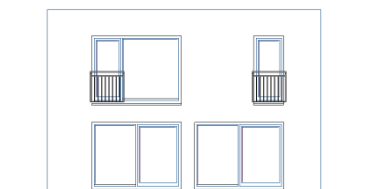
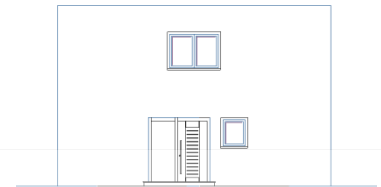
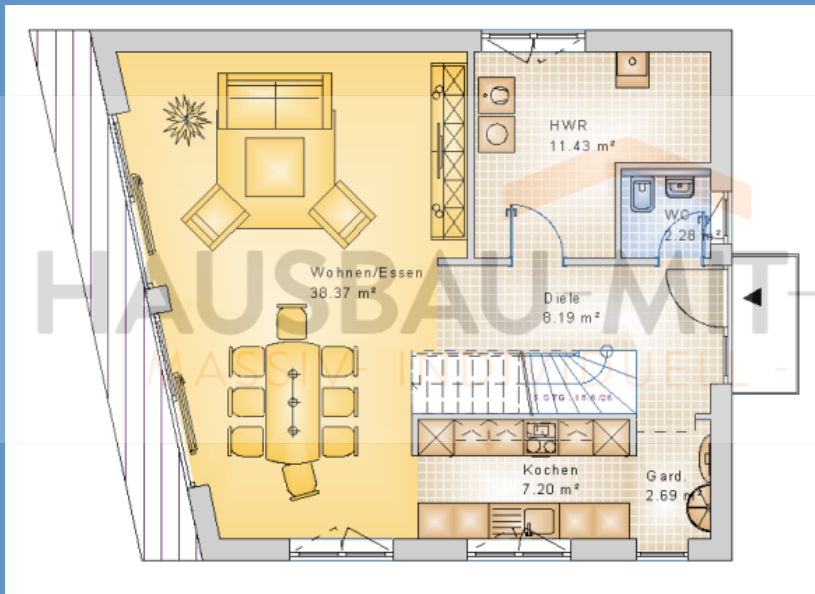
MASSIV- INDIVIDUELL - PREISWERT



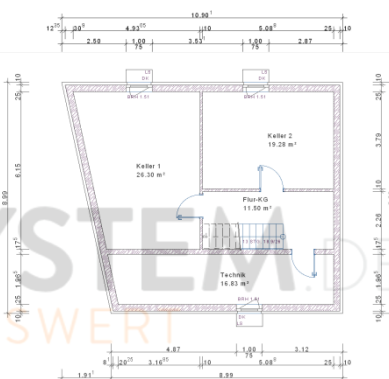
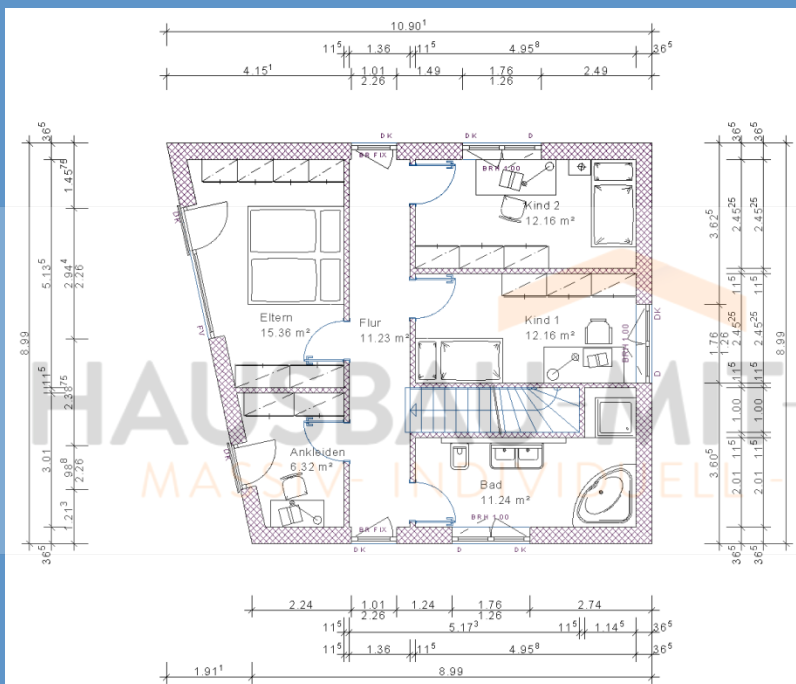
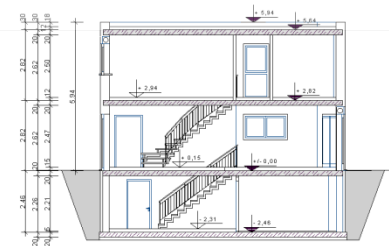
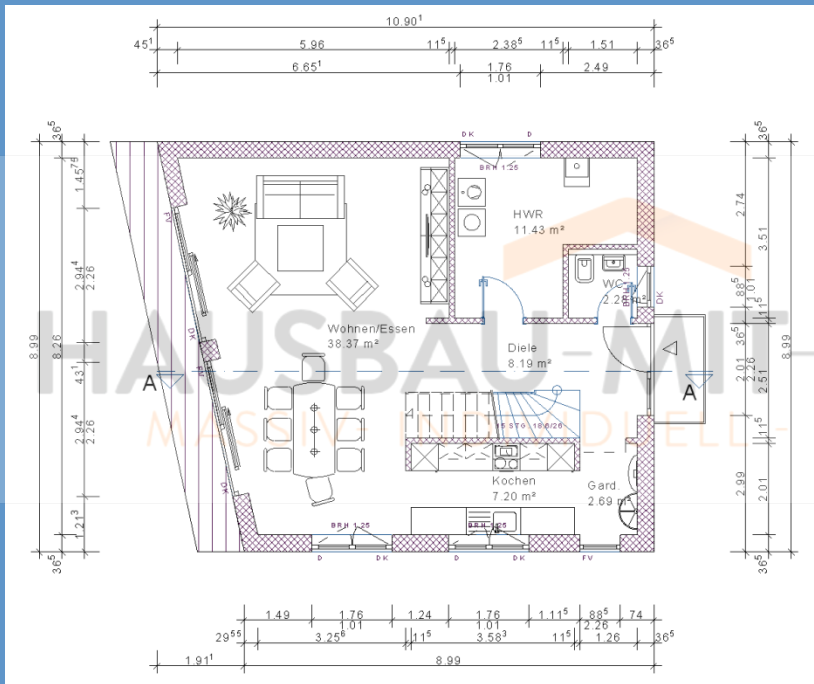
EFH Bauhausstil „Meerbusch“ bauen

| | |
|-------------------|-----------------------|
| Wohnfläche Gesamt | 139,99 m ² |
| Wohnfläche EG | 71,05 m ² |
| Wohnfläche OG | 68,94 m ² |

Haus schlüsselfertig bauen EFH Flachdach Variante 68



Haus massiv bauen EFH Kubus Variante 68



Haus günstig bauen

Einfamilienhaus Variante 68



Wohn-/Nutzflächen

Wohnfläche Erdgeschoss

| | |
|-------------------|---------------------|
| Wohnen/Essen | 39,50m ² |
| HWR | 11,28m ² |
| Diele | 8,10m ² |
| Kochen | 7,11m ² |
| Garderobe | 2,84m ² |
| WC | 2,22m ² |
| Summe Erdgeschoss | 71,05m ² |

Wohnfläche Obergeschoss

| | |
|--------------------|---------------------|
| Eltern | 15,88m ² |
| Kind 1 | 12,01m ² |
| Kind 1 | 12,01m ² |
| Bad | 11,08m ² |
| Flur | 11,51m ² |
| Ankleiden | 6,45m ² |
| Summe Obergeschoss | 68,94m ² |

Gesamtwohnfläche 139,99m²

Nutzfläche Kellergeschoss

| | |
|------------------|---------------------|
| Keller 1 | 26,09m ² |
| Keller 2 | 19,10m ² |
| Technik | 16,62m ² |
| Flur-KG | 11,35m ² |
| Summe Nutzfläche | 73,16m ² |

Geschossflächen/Volumen

| | |
|--------------------|----------------------|
| BGF Kellergeschoss | 89,41m ² |
| BGF Erdgeschoss | 89,41m ² |
| BGF Obergeschoss | 89,41m ² |
| Summe BGF | 268,23m ² |

| | |
|--------------------|-----------------------|
| BRI Kellergeschoss | 237,829m ³ |
| BRI Erdgeschoss | 252,135m ³ |
| BRI Obergeschoss | 252,135m ³ |
| BRI Dachgeschoss | 26,823m ² |
| Summe BRI | 768,922m ³ |