



# HAUSBAU-MIT-SYSTEM.DE

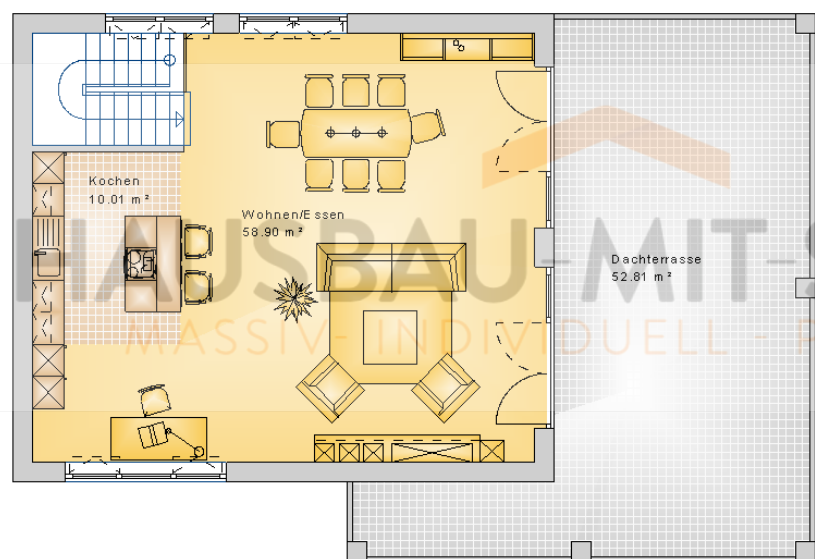
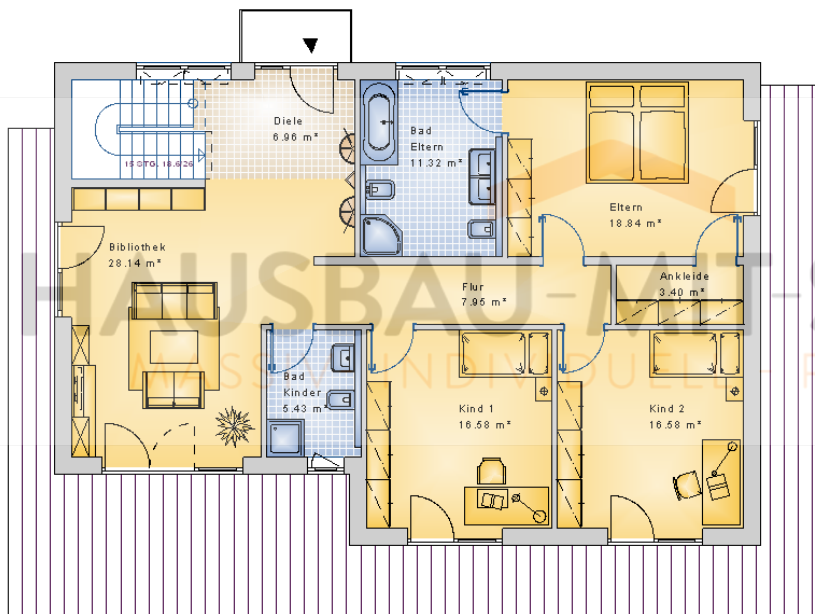
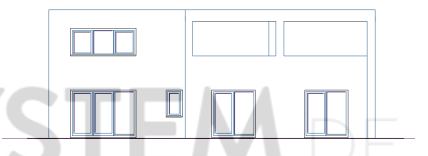
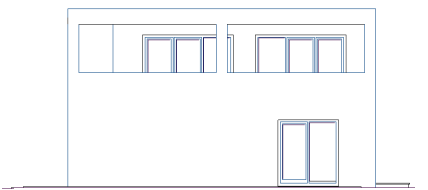
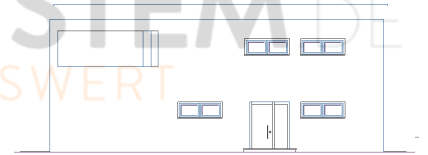
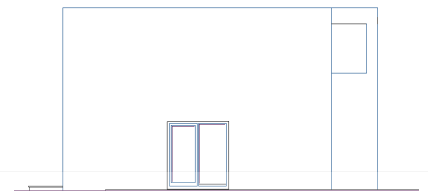
MASSIV- INDIVIDUELL - PREISWERT



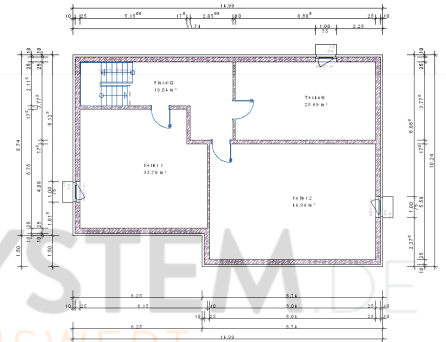
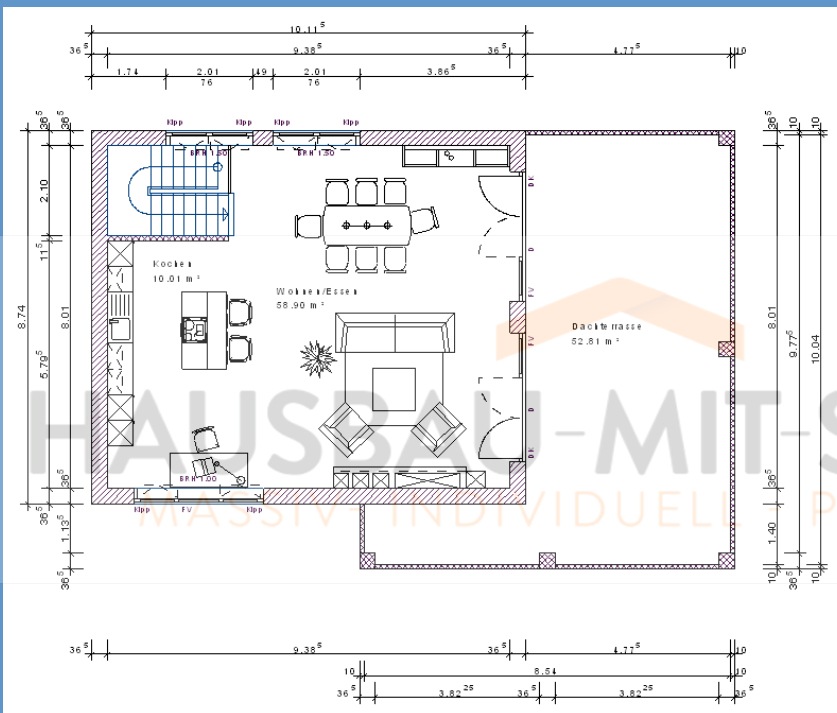
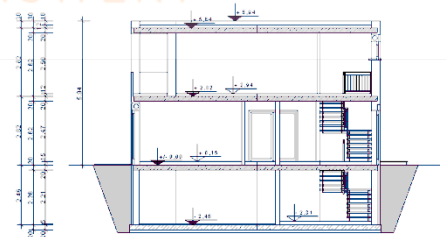
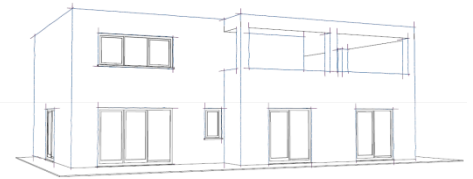
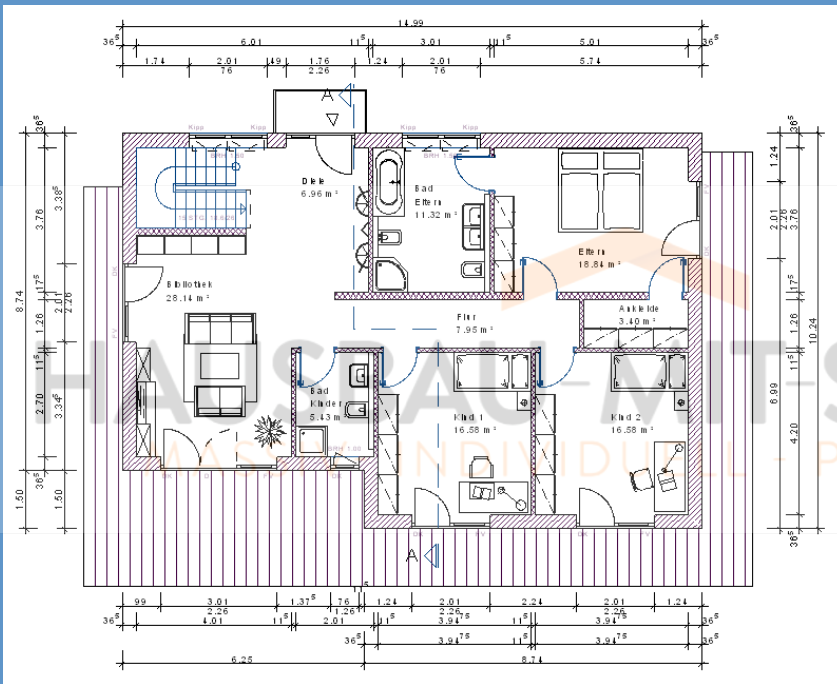
## EFH Bauhausstil „Marl“ bauen

Wohnfläche Gesamt	212,91 m <sup>2</sup>
Wohnfläche EG	116,47 m <sup>2</sup>
Wohnfläche DG	96,44 m <sup>2</sup>

# Haus schlüsselfertig bauen EFH Flachdach Variante 36



# Haus massiv bauen EFH Kubus Variante 36



# Haus günstig bauen

## Einfamilienhaus Variante 36



### Steckbrief des Hauses

#### Wohn-/Nutzflächen

##### Wohnfläche Erdgeschoss

Bibliothek	29,07 m <sup>2</sup>
Eltern	19,11 m <sup>2</sup>
Kind 1	16,87 m <sup>2</sup>
Kind 2	16,87 m <sup>2</sup>
Bad Eltern	11,18 m <sup>2</sup>
Flur	7,81 m <sup>2</sup>
Diele	6,90 m <sup>2</sup>
Bad Kinder	5,34 m <sup>2</sup>
Ankleide	3,32 m <sup>2</sup>
Summe Erdgeschoss	116,47 m <sup>2</sup>

##### Wohnfläche Obergeschoss

Wohnen/Essen	59,99 m <sup>2</sup>
Dachterrasse	26,50 m <sup>2</sup>
Kochen	9,95 m <sup>2</sup>
Summe Obergeschoss	96,44 m <sup>2</sup>

Gesamtwohnfläche 212,91 m<sup>2</sup>

##### Nutzfläche Kellergeschoss

Keller 2	44,67 m <sup>2</sup>
Keller 1	33,46 m <sup>2</sup>
Technik	25,48 m <sup>2</sup>
Flur-KG	18,82 m <sup>2</sup>
Summe Nutzfläche	122,43 m <sup>2</sup>

#### Geschossflächen/Volumen

BGF Kellergeschoss	144,12 m <sup>2</sup>
BGF Erdgeschoss	144,12 m <sup>2</sup>
BGF Obergeschoss	88,41 m <sup>2</sup>
Summe BGF	376,65 m <sup>2</sup>

BRI Kellergeschoss	347,335 m <sup>3</sup>
BRI Erdgeschoss	406,426 m <sup>3</sup>
BRI Obergeschoss	249,302 m <sup>3</sup>
BRI Dachgeschoss	43,237 m <sup>3</sup>
Summe BRI	1046,300 m <sup>3</sup>