



HAUSBAU-MIT-SYSTEM.DE

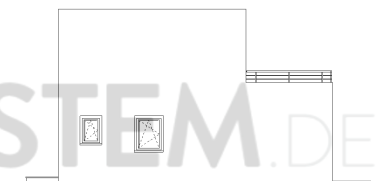
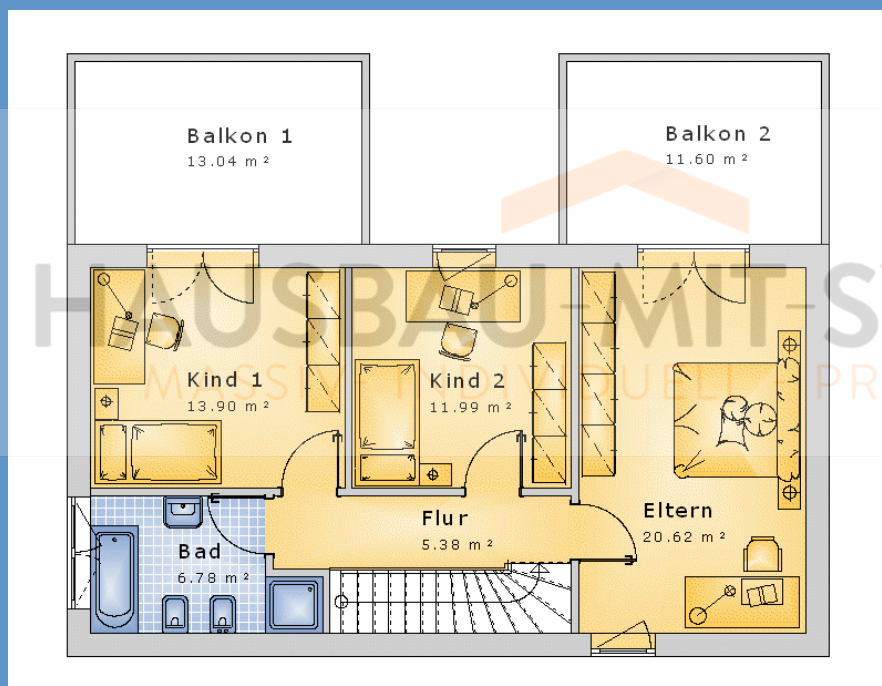
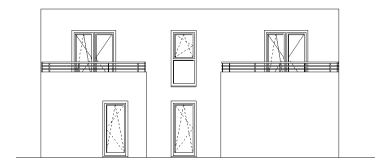
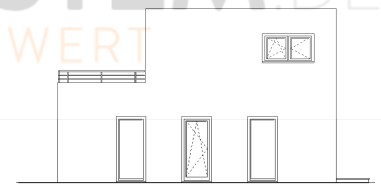
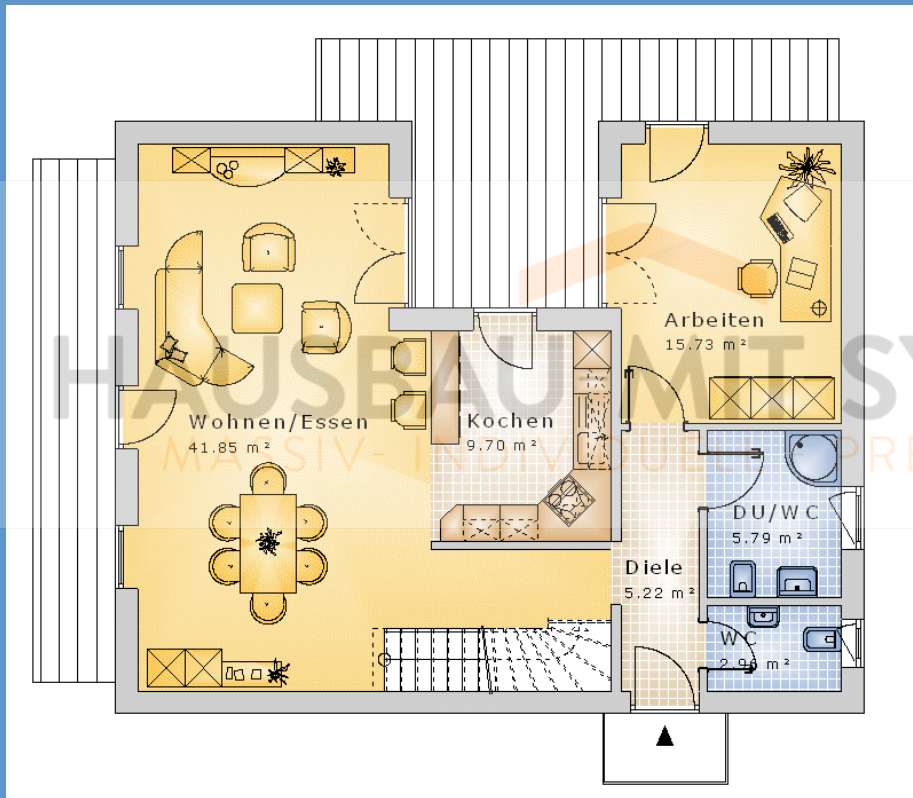
MASSIV- INDIVIDUELL - PREISWERT



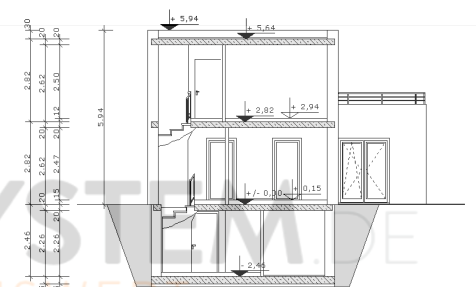
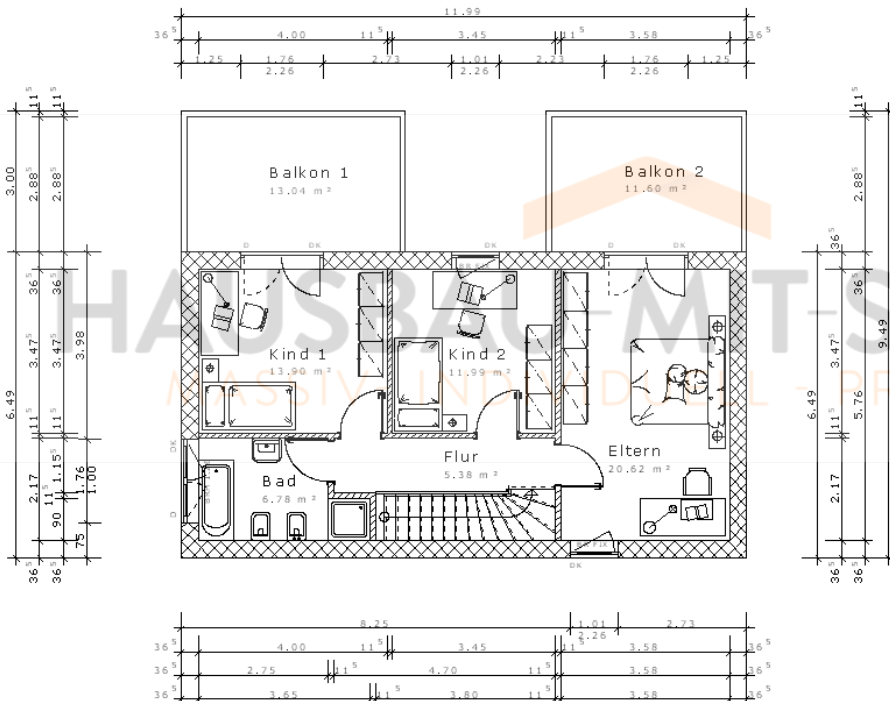
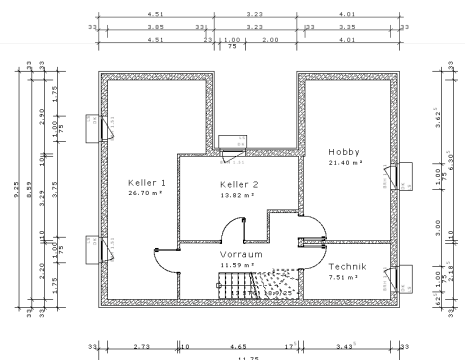
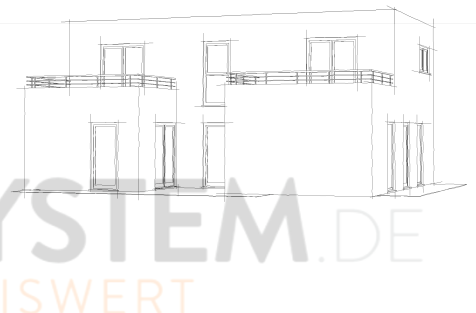
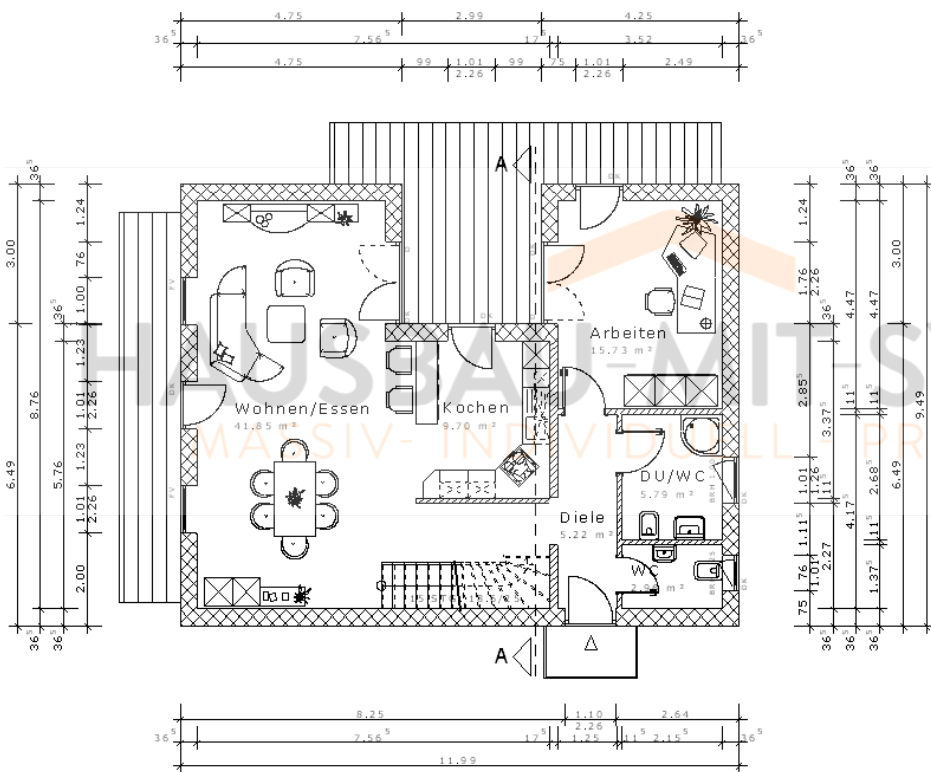
EFH Bauhausstil „Düsseldorf“ bauen

| | |
|-------------------|-----------------------|
| Wohnfläche Gesamt | 154,26 m ² |
| Wohnfläche EG | 82,59 m ² |
| Wohnfläche DG | 71,67 m ² |

Haus schlüsselfertig bauen EFH Flachdach Variante 2



Haus massiv bauen EFH Kubus Variante 2



Haus günstig bauen

Einfamilienhaus Variante 2



Steckbrief des Hauses

Wohn-/Nutzflächen

Wohnfläche Erdgeschoss

| | |
|--------------------------|---------------------------|
| Wohnen/Essen | 42,79m ² |
| Arbeiten | 16,25m ² |
| Kochen | 9,86m ² |
| DU/WC | 5,69m ² |
| Diele | 5,11m ² |
| WC | 2,89m ² |
| Summe Erdgeschoss | 82,59m² |

Wohnfläche Dachgeschoss

| | |
|---------------------------|---------------------------|
| Eltern | 21,11m ² |
| Kind 1 | 14,18 |
| Balkon 1 | 6,52m ² |
| Kind 2 | 12,10m ² |
| Balkon 2 | 5,80m ² |
| Bad | 6,66m ² |
| Flur | 5,30m ² |
| Summe Dachgeschoss | 71,67m² |

Gesamtwohnfläche 154,26m²

Nutzfläche Kellergeschoss

| | |
|-------------------------|---------------------------|
| Hobby | 21,21m ² |
| Keller 1 | 26,45m ² |
| Keller 2 | 13,66m ² |
| Technik | 7,40m ² |
| Vorraum | 11,43m ² |
| Summe Nutzfläche | 80,15m² |

Geschossflächen/Volumen

| | |
|--------------------|----------------------------|
| BGF Kellergeschoss | 99,00m ² |
| BGF Erdgeschoss | 104,82m ² |
| BGF Dachgeschoss | 77,82m ² |
| Summe BGF | 281,64m² |

| | |
|--------------------|-----------------------------|
| BRI Kellergeschoss | 268,283m ³ |
| BRI Erdgeschoss | 295,579m ³ |
| BRI Dachgeschoss | 242,783m ³ |
| Summe BRI | 806,645m³ |