



# HAUSBAU-MIT-SYSTEM.DE

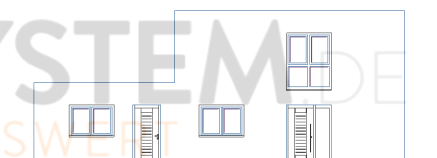
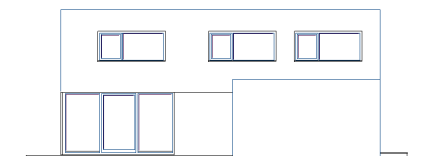
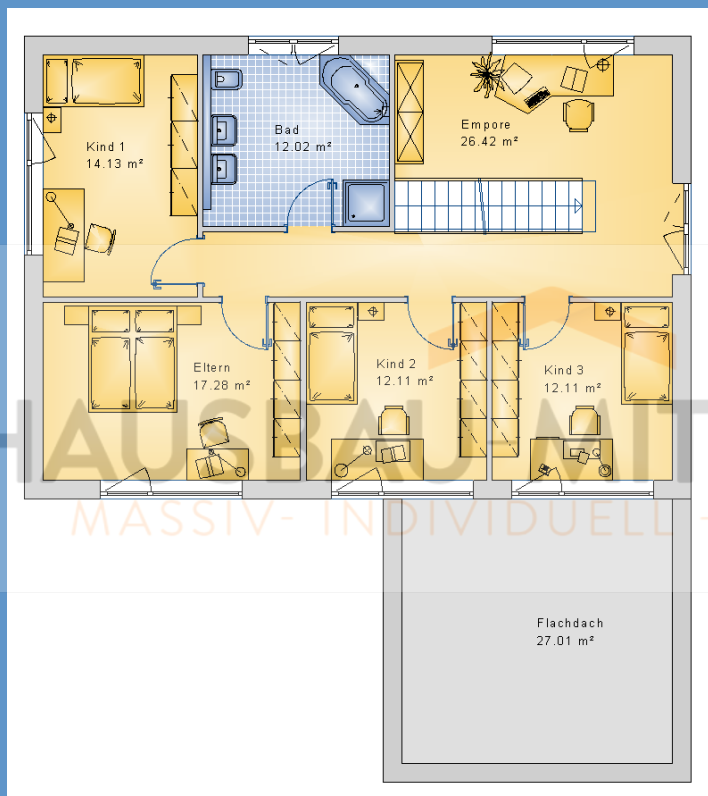
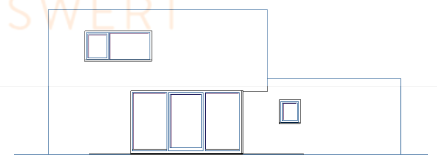
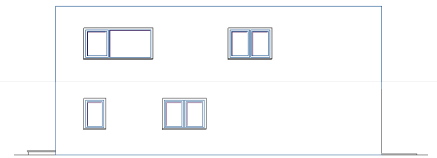
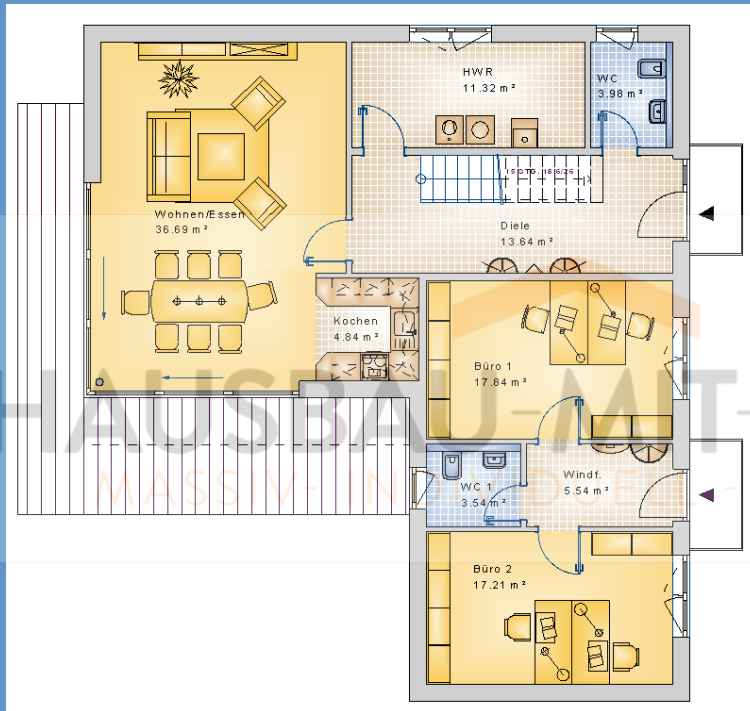
MASSIV- INDIVIDUELL - PREISWERT



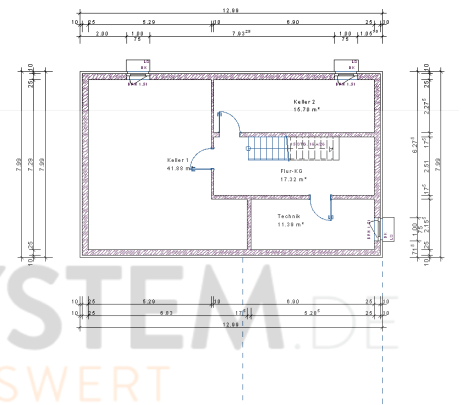
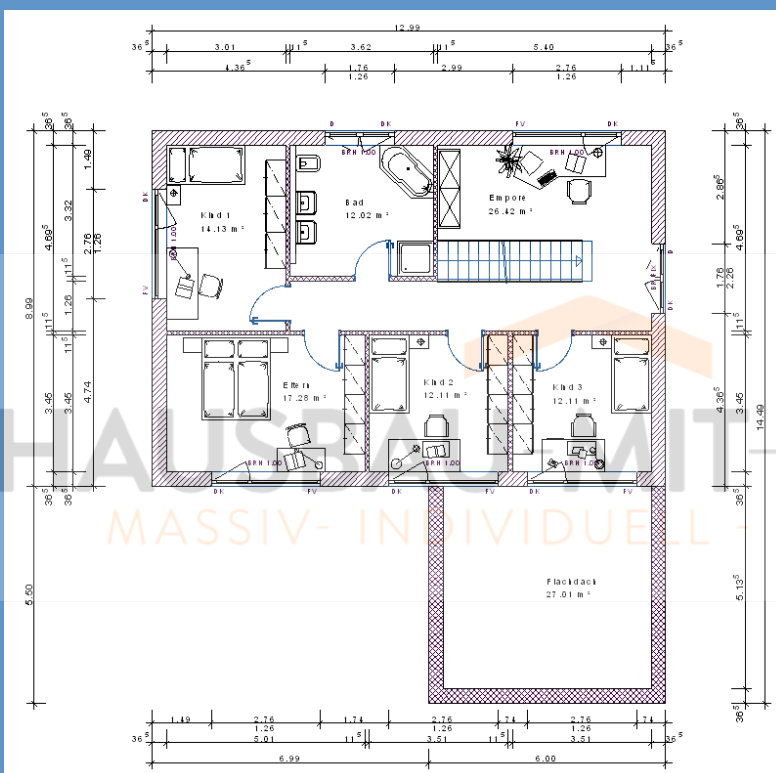
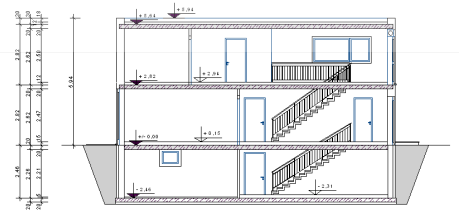
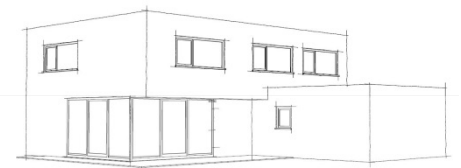
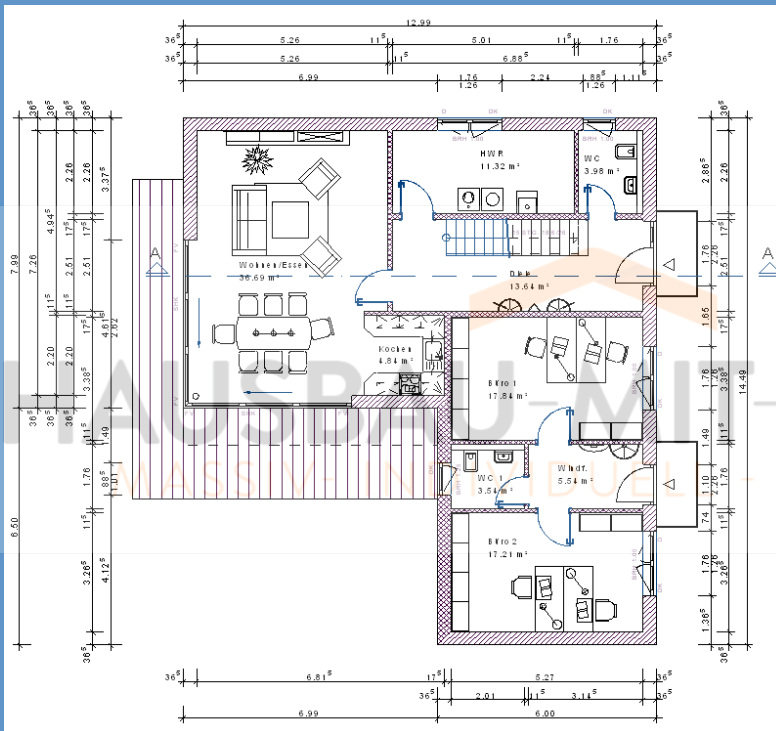
## EFH Bauhausstil „Dormagen“ bauen

Wohnfläche Gesamt	208,94 m <sup>2</sup>
Wohnfläche EG	115,48 m <sup>2</sup>
Wohnfläche DG	93,46 m <sup>2</sup>

# Haus schlüsselfertig bauen EFH Flachdach Variante 53



# Haus massiv bauen EFH Kubus Variante 53



# Haus günstig bauen

## Einfamilienhaus Variante 53



### Wohn-/Nutzflächen

#### Wohnfläche Erdgeschoss

Wohnen/Essen	38,54 m <sup>2</sup>
Büro 1	17,67 m <sup>2</sup>
Büro 2	17,04 m <sup>2</sup>
Diele	13,49 m <sup>2</sup>
HWR	11,17 m <sup>2</sup>
Windf.	5,44 m <sup>2</sup>
Kochen	4,77 m <sup>2</sup>
WC	3,90 m <sup>2</sup>
WC 1	3,46 m <sup>2</sup>
Summe Erdgeschoss	115,48 m <sup>2</sup>

#### Wohnfläche Obergeschoss

Empore	26,55 m <sup>2</sup>
Eltern	17,11 m <sup>2</sup>
Kind 1	13,98 m <sup>2</sup>
Kind 2	11,97 m <sup>2</sup>
Kind 3	11,97 m <sup>2</sup>
Bad	11,88 m <sup>2</sup>
Summe Obergeschoss	93,46 m <sup>2</sup>

Gesamtwohnfläche 208,94 m<sup>2</sup>

#### Nutzfläche Kellergeschoss

Keller 1	41,60 m <sup>2</sup>
Flur-KG	17,13 m <sup>2</sup>
Keller 2	15,52 m <sup>2</sup>
Technik	11,24 m <sup>2</sup>
Summe Nutzfläche	85,49 m <sup>2</sup>

### Geschossflächen/Volumen

BGF Kellergeschoss	103,79 m <sup>2</sup>
BGF Erdgeschoss	142,79 m <sup>2</sup>
BGF Obergeschoss	116,78 m <sup>2</sup>
Summe BGF	363,36 m <sup>2</sup>

BRI Kellergeschoss	250,134 m <sup>3</sup>
BRI Erdgeschoss	402,668 m <sup>3</sup>
BRI Obergeschoss	329,320 m <sup>3</sup>
BRI Dachgeschoss	35,034 m <sup>3</sup>
Summe BRI	1017,156 m <sup>3</sup>