



# HAUSBAU-MIT-SYSTEM.DE

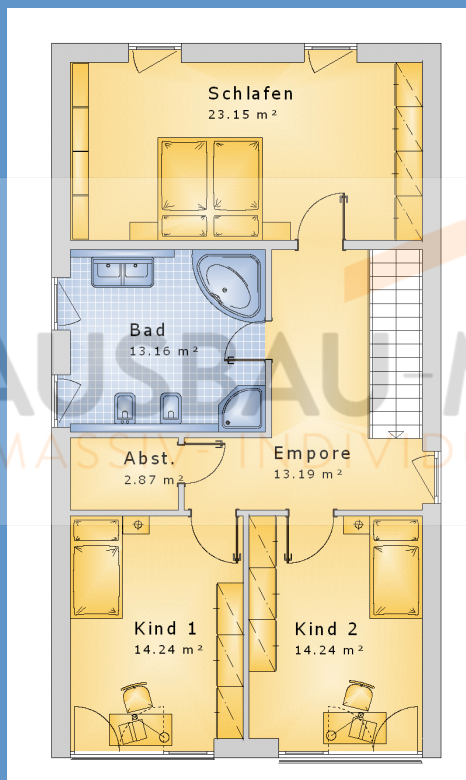
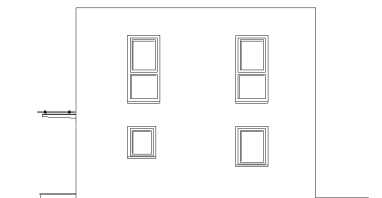
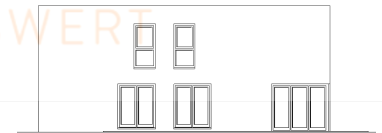
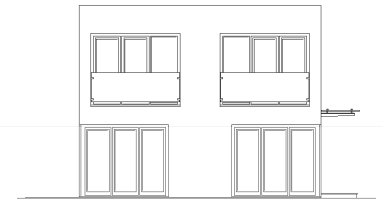
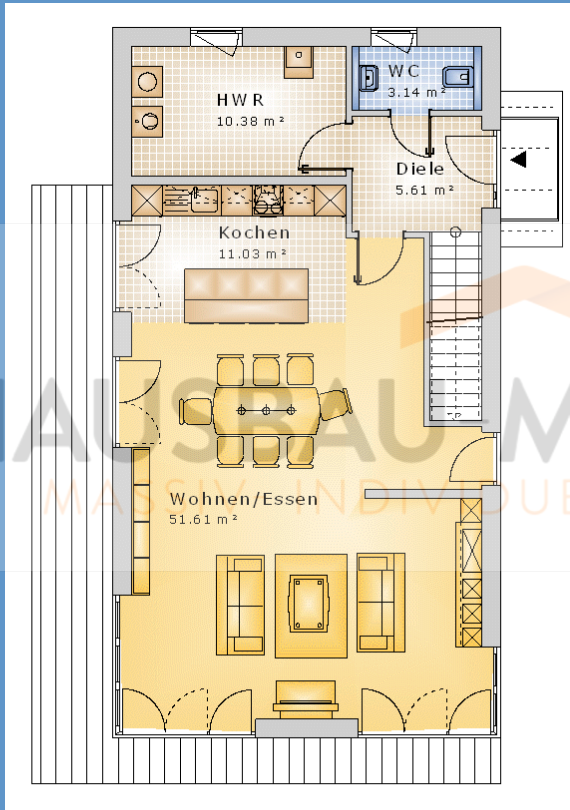
MASSIV- INDIVIDUELL - PREISWERT



## EFH Bauhausstil „Bochum“ bauen

Wohnfläche Gesamt	167,27 m <sup>2</sup>
Wohnfläche EG	84,68 m <sup>2</sup>
Wohnfläche DG	82,59 m <sup>2</sup>

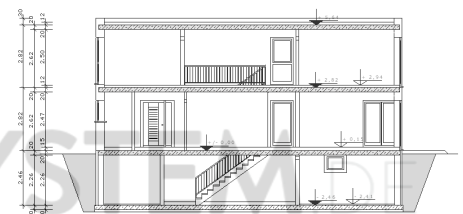
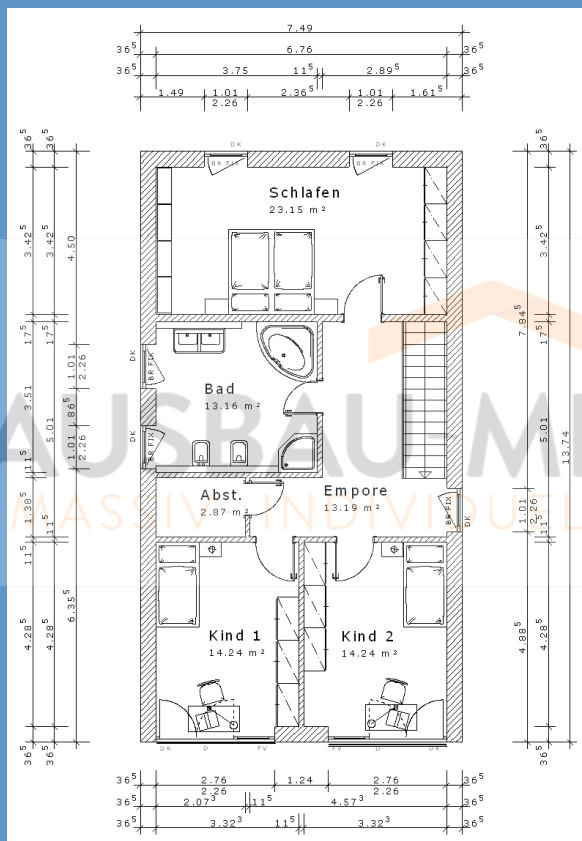
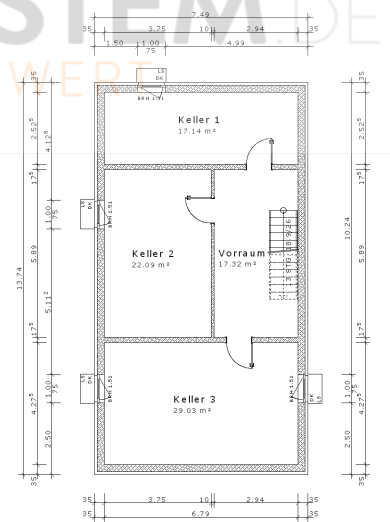
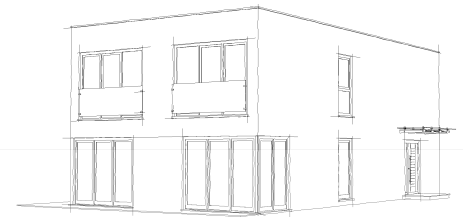
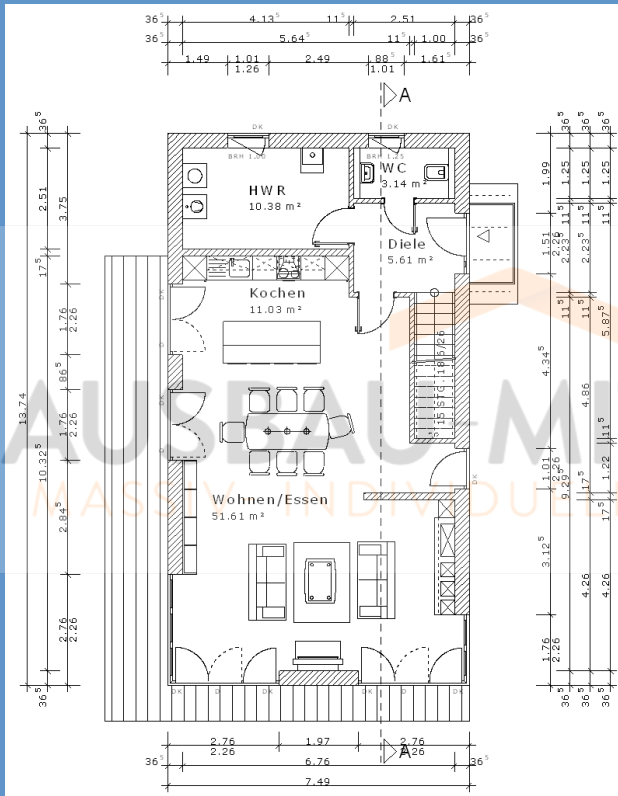
# Haus schlüsselfertig bauen EFH Flachdach Variante 6



HAUSEBAU MIT-SYSTEM.DE  
MASSIV INDIVIDUELL - PREISWERT

HAUSEBAU MIT-SYSTEM.DE  
MASSIV INDIVIDUELL - PREISWERT

# Haus massiv bauen EFH Kubus Variante 6



# Haus günstig bauen

## Einfamilienhaus Variante 6



## Steckbrief des Hauses

### Wohn-/Nutzflächen

#### Wohnfläche Erdgeschoss

Wohnen/Essen	54,46m <sup>2</sup>
Kochen	11,38m <sup>2</sup>
HWR	10,25m <sup>2</sup>
Diele	5,53m <sup>2</sup>
WC	3,06m <sup>2</sup>
<b>Summe Erdgeschoss</b>	<b>84,68m<sup>2</sup></b>

#### Wohnfläche Obergeschoss

Schlafen	23,45m <sup>2</sup>
Kind 2	14,77m <sup>2</sup>
Kind 1	14,77m <sup>2</sup>
Empore	13,29m <sup>2</sup>
Bad	13,51m <sup>2</sup>
Abst.	2,80m <sup>2</sup>
<b>Summe Obergeschoss</b>	<b>82,59m<sup>2</sup></b>

**Gesamtwohnfläche** 167,27m<sup>2</sup>

#### Nutzfläche Kellergeschoss

Keller 3	28,81m <sup>2</sup>
Keller 2	21,90m <sup>2</sup>
Vorraum	17,14m <sup>2</sup>
Keller 1	16,95m <sup>2</sup>
<b>Summe Nutzfläche</b>	<b>84,80m<sup>2</sup></b>

### Geschossflächen/Volumen

BGF Kellergeschoss	102,91m <sup>2</sup>
BGF Erdgeschoss	102,91m <sup>2</sup>
BGF Obergeschoss	102,91m <sup>2</sup>
<b>Summe BGF</b>	<b>308,73m<sup>2</sup></b>

BRI Kellergeschoss	273,748m <sup>3</sup>
BRI Erdgeschoss	290,214m <sup>3</sup>
BRI Obergeschoss	290,214m <sup>3</sup>
BRI Dachgeschoss	30,874m <sup>3</sup>
<b>Summe BRI</b>	<b>885,050m<sup>3</sup></b>